



RECP #: 752645

RECORDED 5/8/2019 AT 1:10 PM BK# 2620 PG# 1687
Debra K. Lee, CLERK OF LARAMIE COUNTY, WY PAGE 1 OF 1

STATE OF WYOMING CORNER RECORD

(In compliance with the CORNER PERPETUATION AND FILING ACT, Wyoming Statutes, 1997 Section 33-29-140, et. seq., and the Rules and Regulations of the Board of Registrations for Professional Engineers and Professional Land Surveyors)

EAST QUARTER CORNER SECTION 25, T. 18 N., R. 64 W., 6TH P.M., LARAMIE COUNTY, WYOMING

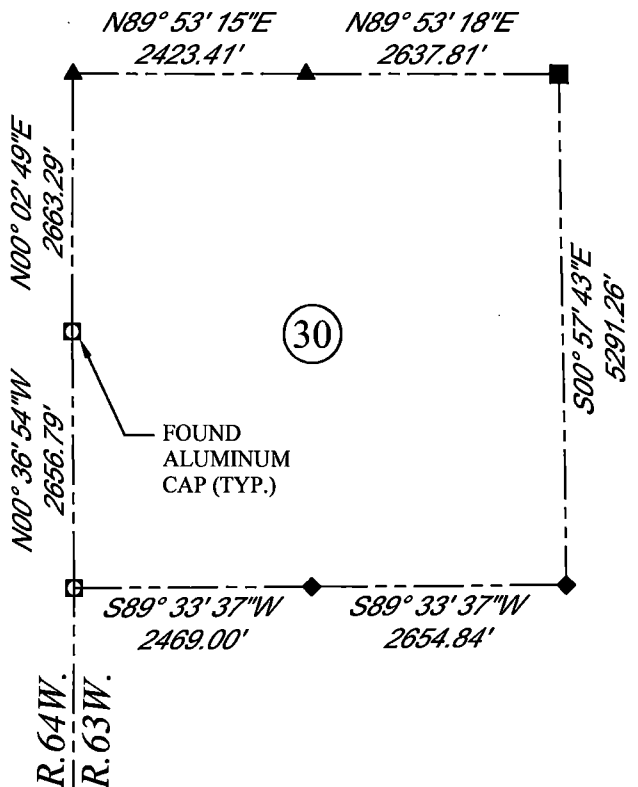
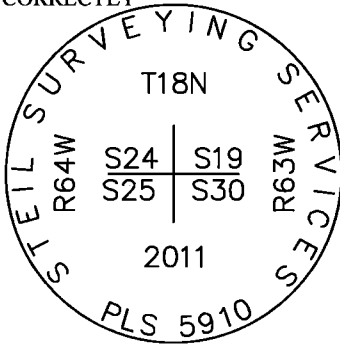
GLO: SET A SANDSTONE 18X10X6, 12 IN. DEEP, MARKED 1/4 ON WEST SIDE FOR 1/4 SEC. COR.

FOUND: 3.25" A.C. 0.1' ABOVE SURFACE, STAMPED AS SHOWN, SET BETWEEN 2 SANDSTONES. CAP IS SET IN CORRECT POSITION BUT IS STAMPED INCORRECTLY.



SCALE: 1" = 2000'
NORTH DETERMINED BY
G.P.S OBSERVATIONS

FOUND 3.25" ALUMINUM CAP,
STAMPED AS SHOWN. STAMPED
INCORRECTLY



LEGEND:

- FOUND BLM CAP
- FOUND USFS CAP
- FOUND STONE
- FOUND PRIVATE MONUMENT
- ◆ CALCULATED POSITION
- ▲ SET MONUMENT (LS10245)
- SECTION LINE

DATE OF FIELD WORK: 8/23/2018 OFFICE REFERENCE: MERIDEN

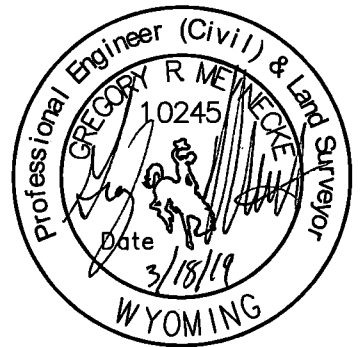
CROSS INDEX DIAGRAM

1	2	3	4	5	6	7	8	9	10	11	12	13	14	15	16	17	18	19	20	21	22	23	24	25	
A																									A
B																									B
C		6				5				4				3					2						C
D																									D
E																									E
F																									F
G			7			8				9				10					11						G
H																									H
J																									J
K																									K
L			18			17				16				15					14						L
M																									M
N																									N
O																									O
P				19		20				21				22					23						P
Q																									Q
R																									R
S																									S
T				30		29				28				27					26						T
U																									U
V																									V
W																									W
X				31		32				33				34					35						X
Y																									Y
Z																									Z
	1	2	3	4	5	6	7	8	9	10	11	12	13	14	15	16	17	18	19	20	21	22	23	24	25

WOOD
2615 AVIATION DRIVE
SHERIDAN, WY 82801
PH: 307-675-6400



THIS CORNER RECORD WAS
PREPARED BY ME OR UNDER
MY DIRECTION AND
SUPERVISION,
SEAL AND SIGNATURE



CORNER NAME: EAST QUARTER SECTION: 25 T. 18 N., R. 64 W. ; 6TH P.M. CROSS-INDEX # T-25
SBRPELS/PLSW: MARCH 1994; PLSW JANUARY 1998